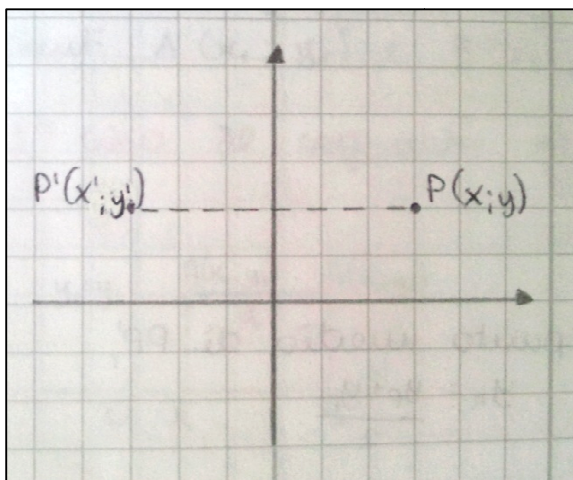


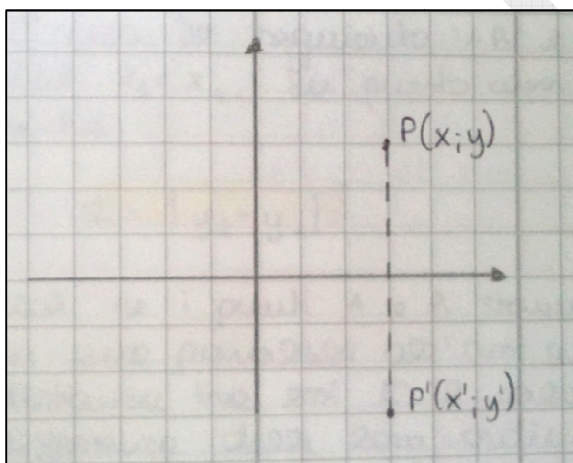
## SIMMETRIE NEL PIANO CARTESIANO

### SIMMETRIA RISPETTO ALL'ASSE Y



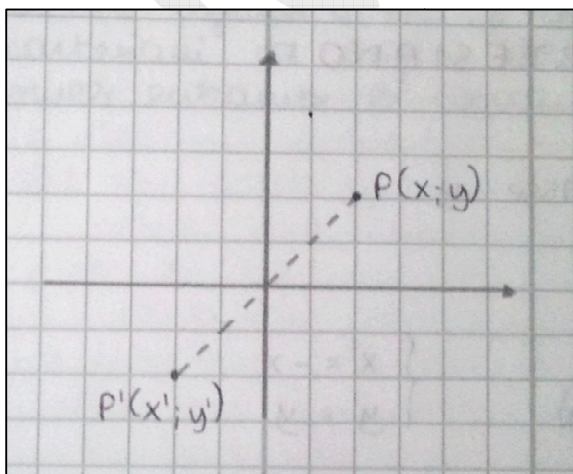
$$\begin{cases} x' = -x \\ y' = y \end{cases}$$

### SIMMETRIA RISPETTO ALL'ASSE X



$$\begin{cases} x' = x \\ y' = -y \end{cases}$$

### SIMMETRIA RISPETTO ALL'ORIGINE



$$\begin{cases} x' = -x \\ y' = -y \end{cases}$$